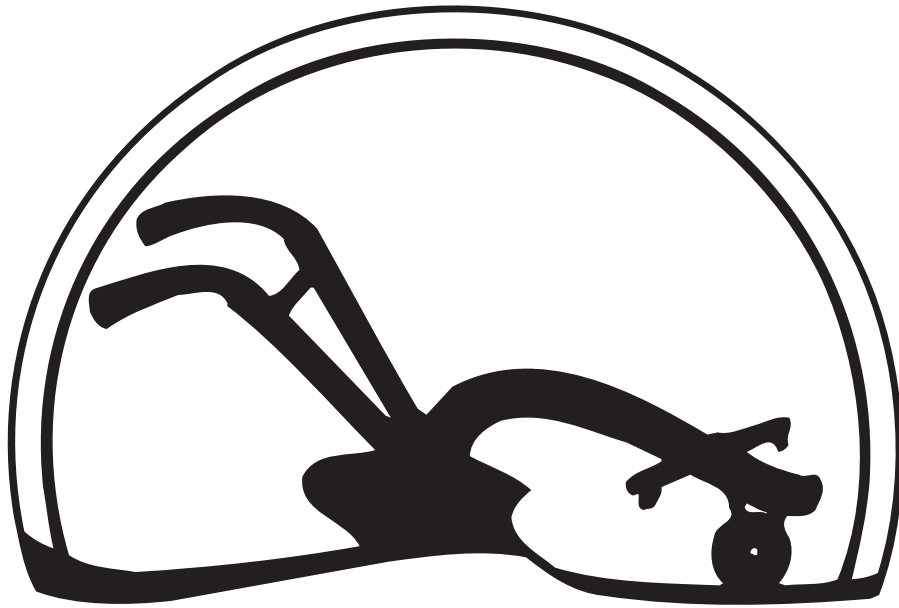


AGRICULTURAL HALL OF FAME

**HONORING FLORIDA'S
GREAT AGRICULTURALISTS**



**32nd ANNUAL
CEREMONIES**

**February 9, 2010
Special Events Center
The Florida State Fair**



Honorable Adam Putnam
U.S. Representative
12th Congressional District of Florida

Congressman Adam H. Putnam has spent his life immersed in Florida agriculture, serving in key leadership positions and shepherding the future of an industry and way of life that is undergoing dramatic change.

Adam is a fifth generation member of a Florida citrus and cattle ranching family. Such a legacy brings with it a keen appreciation for Florida’s rich agricultural history and the industry’s lasting contributions to the state and its citizens. As a United States Congressman, Adam faithfully represents one of the most agriculturally intensive areas of Florida and has played a pivotal role in spearheading federal legislation that profoundly affects Florida agriculture.

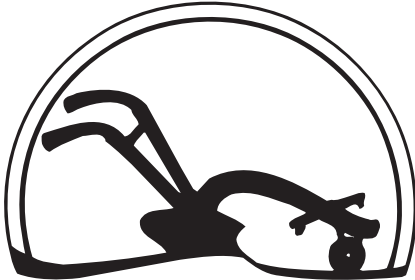
Among his congressional accomplishments are major provisions in food safety reform legislation the House of Representatives passed in 2009. Adam’s provisions will modernize safety rules and ensure that foreign food producers are required to meet the same standards as American producers. He has also championed research efforts in the prevention of diseases and pests that afflict Florida crops. Diseases and pests have become some of the greatest challenges to Florida agriculture in recent years as the hurricanes of 2004 and 2005 and increased international trade have created new avenues for spreading them across the state. He has also played a key role in guiding the passage of the current federal Farm Bill which sets federal agriculture policy for a five-year period.

Adam’s effectiveness as a congressional lawmaker is all the more notable considering his relative youth. By the time he took office in Congress, Adam had served four years in the Florida House of Representatives and became chairman of the Agriculture Committee. When elected to the U.S. House in 2001 at age 26, he became one of the youngest members of Congress in history. Despite his youth, Adam quickly earned the respect of his Congressional colleagues, first by becoming the youngest chairman of a subcommittee since World War II, then culminating his rise in the House leadership ranks by garnering the chairmanship of the Republican Conference, his party’s third highest leadership position.

His rapid ascent caused the editor of one Capitol Hill newspaper to quip, “Adam Putnam has been rising through the ranks so fast that I would think he would get vertigo.”

Adam is a 1995 graduate of the University of Florida’s College of Agriculture where he was named Outstanding Male Graduate and a member of Florida Blue Key.

Adam was born in the heart of the state, in the city of Bartow, where he lives today with his wife, Melissa, and their four children.



OFFICERS

President Reggie Brown
Vice President..... Wayne Harris
Secretary.....Robert M. (Myke) Morris
Treasurer Kevin Metheny
Historian..... Chip Hinton

BOARD OF DIRECTORS

| | | |
|------------------|----------------|-------------------|
| Eugene Badger | Hugh Gramling | Myke Morris |
| Glenn Bissett | Jim Handley | Bob Morris |
| L.M. Buddy Blain | Wayne Harris | Patsy Nathe |
| David Bridges | David Herndon | Ron O'Connor |
| Reggie Brown | Rod Hemphill | Danny Raulerson |
| Lyn Cacella | Chip Hinton | Chuck Smith |
| Barbara Carlton | Lisa Hinton | Denise Stenbridge |
| Amy Carpenter | Ray Hodge | Jim Spratt |
| Duke Chadwell | John Hooker | Judi Whitson |
| Julie Chandler | Richard Joyner | Ashley Wood |
| Candace Fulford | Lisa Lochridge | |
| Lisa Gaskella | Kevin Metheny | |

COOPERATORS

| | | | |
|-----------------|-----------------|--------------|------------|
| Vina Jean Banks | Richard Gunnels | Chuck Pesano | Pam Waldon |
| Stephen Gran | Jemy Hinton | Ron Thomas | |

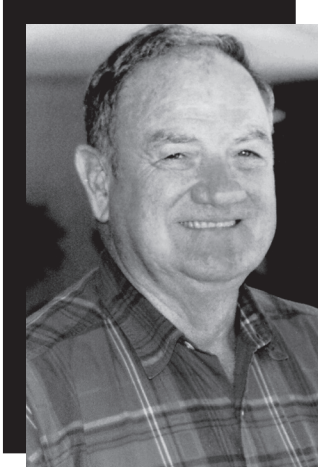
2010 OFFICIAL PROGRAM

Reception – 5:30 p.m.....Special Events Center
Dinner – 7:00 p.m.....Special Events Center
Welcome.....Reggie Brown, President
Florida Agricultural
Hall of Fame Foundation

Emcee.....Honorable Adam Putnam
U.S. Representative
12th Congressional District of Florida

Presentation of Members 2010.....Honorable Charles H. Bronson
Commissioner of Agriculture

Richard Alger
Homestead



Richard Alger is one of South Florida’s most successful agriculturists, the owner of Alger Farms, Inc., which harvests over 1,200 acres of sweet corn and 200 acres of trees in Miami-Dade County. Alger is an effective leader of and spokesman for his industry. A Yale-educated plant scientist, he is a strong voice for agriculture in a county facing the challenges of explosive growth and rapid urbanization.

Richard Alger was born in 1931 in Brockton, Massachusetts. His parents, Mason and Dorothy Alger, moved the family to Florida when Richard was still an infant. In Homestead they established what is now known as Alger Farms, Inc., producing sweet corn, potatoes, snap beans and trees. Growing up, young Richard worked in the fields with his father during summer

vacations. He attended Exeter Academy and later Yale University, where he earned his bachelor’s degree in 1953.

After graduating from college, Alger became a full partner in the family business. During his farming career, he wore many hats. He ran a potato packinghouse, a sweet corn hydro-cooler and a farm shop. He also worked as a tractor driver, office manager and packinghouse manager.

He always made sure his operations utilized the most current technology, and he was a great supporter of agricultural research. In the 1980s, for example, he donated \$30,000 to the University of Florida’s Institute of Food and Agricultural Sciences for a study on the control of silk fly. He also funded a study on the hydro-cooling of potatoes. His contributions prompted other growers to pitch in too.

Farming is a demanding profession, and many in the industry are content to focus exclusively on their own crops and production. Not Richard Alger. He always found time to represent industry-wide interests, monitoring the work of the local, state, and federal governments in their regulation of agriculture. He served on the board of many prominent agricultural organizations, including the Florida Fruit and Vegetable Association. He is a past president of the Dade County Farm Bureau and the South Florida Tomato and Vegetable Growers Association. During his recent service on the South Miami-Dade Watershed Study Advisory Committee, he won the respect of everyone he worked with through his fairness and reliance on sound logic.

Alger is simply a great communicator. He has excellent people skills and knows how to talk to everyone from environmentalists to policymakers in a way that is friendly and nonconfrontational yet forthright and effective. Never afraid to speak up, he has been interviewed many times by local, state, and national media in their coverage of agricultural issues. He has a special ability to help urban residents understand the challenges facing agriculture as well as the benefits agriculture can bring to a community.

Alger is actively involved in many civic and charitable organizations, including the Homestead Housing Authority, Baptist Hospital Foundation, and Civitan Club. He was the first donor to Farm Share, a non-profit dedicated to recovering, sorting, packing, and distributing food to people in need. His donation of 10,000 pounds of potatoes encouraged other farmers to follow suit. Since Alger’s initial contribution, Farm Share has distributed over 215 million pounds of food to the poor.

Alger’s leadership in his industry and community has brought him many honors. In 1986 he was inducted into the Dade County Farm Bureau’s Hall of Honor and presented with the Chairman’s Council Award by the South Florida Soil and Water Conservation District. The Dade County Kiwanis Club honored him with its Agribusiness Award in 1976. The Greater Homestead-Florida City Chamber of Commerce named him Agriculturist of the Year in 1983 and Citizen of the Year in 2005.

Richard Alger has four grown children, Barbara, John, Cathy, and Ray, and 15 grandchildren. He lives in Homestead with his wife, Jolayne.

**Ben Hill Griffin III
Frostproof**



Ben Hill Griffin III is one of the giants of the Florida citrus industry. The son of legendary Florida land baron, citrus grower, and state legislator Ben Hill Griffin Jr., he has expanded his father's empire, diversifying the family agribusinesses and continuing his father's well-known tradition of philanthropy. As the head of Ben Hill Griffin, Inc., one of Florida's largest citrus producers, and a major player in the famed Florida agribusiness Alico, Ben Hill Griffin III is one of the most influential people in the citrus industry today.

Griffin was born in Lake Wales in 1942 and graduated from Frostproof High School and Central Florida Community College. He grew up working in his father's citrus groves and on the family cattle ranches. His father was tough and hard-working -- a self-made millionaire who turned 10 acres of citrus groves into one of Florida's biggest agribusinesses -- and he gave his son no special treatment. Ben Hill III learned the business from the ground up, and when it came time for him to take over for his father he was well prepared.

Today Ben Hill Griffin III is chairman of the board and CEO of Ben Hill Griffin, Inc., a private citrus and cattle company with 10,000 acres of citrus groves and 85,000 acres of ranch and timberland in Central Florida. Other company holdings include the Lake Wales Country Club and Griffin Fertilizer Company, one of Florida's largest producers of agricultural fertilizer.

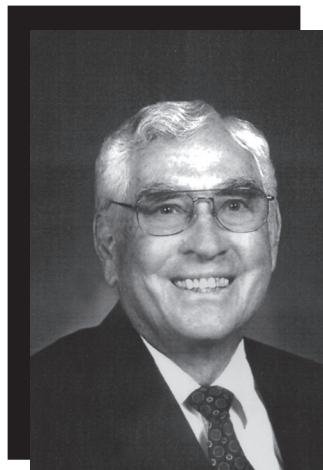
Griffin served as chairman of the board and CEO of Alico from 1990 to 2004. His father had bought a controlling share of the company's stock in the 1970s, when Alico owned over 200,000 acres in Southwest Florida. In the old days, the land was used primarily for citrus, timber, and cattle ranching. But as chairman, Ben Hill Griffin III aimed at more diversified uses, including sugarcane, sod-growing, rock-mining, and real estate development. Meanwhile, he continued to add citrus groves. In 1992 he acquired a controlling interest in Orange-co, a juice and beverage company that operates a large processing plant in Bartow. With the acquisition of Orange-co, Griffin became one of the few men personally involved in every aspect of the citrus industry from planting, harvesting, and packing to processing and marketing.

Griffin is a true leader in the citrus industry, promoting the use of cutting-edge technology and best management practices among growers and sharing his expertise as a grower, packer, and processor with each of Florida's major citrus trade organizations. He is a board member and past president of Seald-Sweet Growers, Inc., the Florida Citrus Processors Association, and Florida Citrus Packers. He is a past chairman of the Florida Citrus Commission and past director of Citrus World, Inc., and the Florida Citrus Showcase. Griffin is a member of the Florida Fruit and Vegetable Association, the Florida Agricultural Council Executive Committee, and the Florida Agricultural Museum board of directors. He was recently inducted into the Florida Citrus Hall of Fame.

Griffin is famous for his leadership in agriculture and for his philanthropy. He is a generous supporter of higher education in Florida. In the 1990s under his direction, Alico donated 760 prime acres in Lee County near Fort Myers for the creation of Florida's 10th public university, Florida Gulf Coast University. Alico also created a 215-acre land endowment for the university and donated money for road construction and academic chairs. The gift was valued at over \$50 million, and at the time it was made it was the largest single contribution in the history of Florida's state university system.

Ben Hill Griffin III lives in Frostproof. He has three grown children, Ben Hill IV, Candace, and Kathryn.

**Rudy Hamrick
Madison**



Rudy Hamrick was a major force in North Florida agriculture for nearly three decades. As director of the Madison County Extension office from 1951 to 1977, his impact on the county’s economy was dramatic. When Hamrick first came to Madison, the tobacco industry was declining all across Northwest Florida. Farm incomes were shrinking, along with the population in rural areas. But Hamrick was determined to try to reverse these trends. Under his leadership, Madison County became one of Florida’s leading agricultural counties, a top producer of swine, poultry, and cattle.

Hamrick was born in 1922 on a farm in Monticello, Florida. He attended Monticello High School and the University of Florida, where he graduated with a bachelor’s degree in agriculture in 1944 and a master’s degree in

agriculture in 1950. In 1951 he was appointed director of the Extension office in Madison County.

In 1964 Hamrick formulated a 10-year plan for agricultural production in Madison County. The goal was to double agricultural income. Committees were established for each major agricultural product. Members of these committees joined state and national associations and worked to improve both production and marketing. By 1974 Madison County had become the largest swine producer in Florida and one of the state’s largest cattle producers. A peach industry had been established, while the poultry industry had quadrupled in size to become the county’s single largest income agribusiness. In the end Hamrick’s 10-year plan exceeded even the most optimistic expectations. It didn’t just double agricultural income; it tripled it.

Hamrick always said the key to his success as a county agent was “liking people” and liking to help them. He believed in the power of education and in helping farmers help themselves. He spent most of his time and energy out in the fields, offering technical advice about both production and marketing. He knew how important it was to help farmers stay informed about the latest agricultural research findings, and he was known for his excellent teaching skills. Hamrick was the first Extension agent ever to be granted the status of full professor at the University of Florida, and he was also chosen by the university to train new agents.

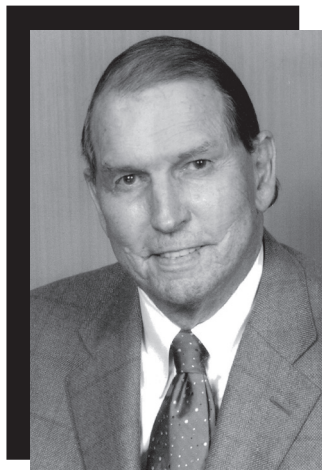
It’s not surprising that Madison County’s 4-H Club flourished under the leadership of this gifted teacher. The program’s popularity surged as it was expanded to cover a new diversity of subject areas, including wildlife management and entomology, as well as home economics, cattle production, and showmanship. Hamrick lobbied tirelessly for the improvement and enlargement of Madison’s Cherry Lake facility, an outdoor classroom used primarily for 4-H summer camp programs. With its rustic cabins, open-air pavilion, and lush natural areas, Camp Cherry Lake continues to provide children with an opportunity for hands-on learning in the context of the real world.

Hamrick was recognized as one of the best Extension directors in the country. In 1964 he received the Distinguished Service Award, the highest honor given by the National Association of County Agricultural Agents. In 1971 he became the first recipient of the SHARE Award for Excellence in Extension presented by the University of Florida. That year he was also named the national winner of the Ciba-Geigy Leadership Recognition Award.

Hamrick was a member of the National Peach Council, the Peach Growers Association, the Madison County Farm Bureau, and the Florida Association of Agricultural Agents. He was an organizing member of the Madison County Swine Producers, the Madison County Milk Producers, the Madison County Cattlemen’s Association, the North Florida Livestock Association, the Georgia-Florida Breeding Association, the State Feeder Pig Sale Committee, and the State Hog Cholera Eradication Committee.

Rudy Hamrick has two grown sons, Rudy Jr. and Bill, and four grandchildren. Myrtice, his wife of 58 years passed away in 2002. He and his wife, Ann, live in Madison.

**Dan McClure
Bradenton**



Dan McClure was one of Florida's most successful tomato growers, with multiple large farms scattered across the state. He was a strong supporter of agricultural research and helped advance the industry through the use of cutting-edge technology. He was an outspoken advocate for agriculture and lent his leadership skills to many of Florida's tomato and vegetable trade organizations. In addition, he was a multi-term Manatee County commissioner with the foresight to push for the development of the county's reservoir, deep-water port, and airport.

McClure was born in Palmetto in 1926. The son of a banker, he grew up on the family's ranches in Manatee County and attended Palmetto High School. After earning a degree in finance and economics from the University of Florida, he served in the Navy before coming home to Manatee County to grow tomatoes and raise cattle. Eventually he owned tomato, vegetable and watermelon farms in Manatee County, Immokalee, Naples, Quincy and California. He also ran a packinghouse, West Coast Tomato, in Palmetto.

McClure was more than a successful grower. He was a leader in the agricultural community. A staunch supporter of agricultural research at the University of Florida, he served on advisory committees for the Gulf Coast Research and Education Center and the Manatee County Extension Service.

He was active in many of Florida's best known agricultural organizations, including the Florida Tomato Exchange, where he served as director, and the Florida Tomato Committee, where he served as chairman. He was a member and leader of the Manatee County Farm Bureau, Florida Farm Bureau, Manatee County Cattlemen's Association, and the Florida Cattlemen's Association. He served on the board of the Florida Fruit and Vegetable Association for nearly 20 years.

McClure was a member of the Manatee County Fair Board and a member of the board of the local USDA Agricultural Stabilization and Conservation Service. He was a great supporter of the Manatee County Agricultural Museum in Palmetto and served as a member of the Finance and Fundraising Committee.

In 1962 McClure won a seat on the Manatee County Commission. He went on to serve four terms, and over the next two decades he became the dominant voice in Manatee County government, pushing ahead with major investments in infrastructure. He knew how to get things done. He was instrumental in creating the Manatee County dam and water systems, the county sewer system, and the county parks and recreation department. He fought to develop Port Manatee, one of the area's most important economic engines.

McClure was a man of incredible energy. He often worked side by side with his employees, roping cattle, harvesting tomatoes, and keeping his packinghouse running in his characteristic hands-on way. But in 1971 he suffered a life-changing accident. He was critically injured when a truck pinned him against a loading dock at West Coast Tomato, crushing his pelvis and nearly cutting him in two. He underwent numerous operations and months of grueling physical therapy in order to learn to walk again.

McClure faced the aftermath of the accident with uncommon courage. Though he would be in and out of hospitals for the rest of his life, he never let the pain stand in his way and often conducted business by phone from his hospital bed.

McClure's leadership in the agriculture industry brought him many honors. Early in his career he received the Outstanding Young Farmer of the Year award from the Junior Chamber of Commerce. In 1989 he was named Manatee County's Outstanding Agriculturist and inducted into the county's Agricultural Hall of Fame. In 1999 he was named an Outstanding Agriculturalist by the Florida Association of County Agricultural Agents.

Dan McClure passed away on September 23, 2006, after a long battle with cancer. He is survived by his wife Corrine and four grown children, Scott, D.C., Mary Anne, and Sandra.

FLORIDA AGRICULTURAL HALL OF FAME

- 1980** - Edwin Hall Finlayson
Thomas Gilbert Lee
Nathan Mayo
Henry Oscar Partin
Hoyle Pounds
Egbert Norman Reasoner
- 1981** - Irlo Overstreet Bronson
Gilbert Andrew Tucker
J. Francis Cooper
Louis E. Larson
Pliny Ward Reasoner
Don A. Storms Sr.
- 1982** - Willard M. Fifield
Robert G. Pitman Jr.
Dr. Herman J. Reitz
James N. Watson
- 1983** - Dr. Raymond B. Becker
John M. Fox
- 1984** - Alan James Norden
- 1985** - John Duda,
Andrew Duda Jr.
Ferdinand Duda
Clinton Huxley Coulter Sr.
Doyle E. Conner
- 1986** - Louis G. MacDowell
Edwin L. Moore
Cedric D. Atkins
Lena Smithers Hughes
B. Edward David Jr.
- 1987** - Ben Hill Griffin Jr.
Anthony T. Rossi
J.O. Pearce Jr.
James S. Wershow
- 1988** - Paul Beary Dickman
John Buckner Boy Sr.
Ruth Springer Wedgworth
- 1989** - Peter S. Harlee
Charles P. Lykes
Donald L. Wakeman
- 1990** - Dr. Robert Henry Harms
Raymond P. Oglesby
Carl G. Rose
Dr. E.T. York Jr.
- 1991** - Doyle E. Carlton Jr.
Dr. Tony J. Cunha
Julian B. Lane
Joseph M. O'Farrell Sr.
- 1992** - Edward J. Campbell
N. Curtis Peterson
Edgar H. Price
Vance V. Vogel
- 1993** - Karl Albritton
Wm. Travis Loften
Dr. John Mortensen
Dr. Julia Morton
Dr. Marshall O. Watkins
- 1994** - Elton L. Hinton
Dr. J. Wayne Reitz
Latimer H. Turner
George H. Wedgworth
- 1995** - Leroy Baldwin
Dr. Clarence L. Campbell Jr.
Latimer "Latt" Maxey
William H. Stuart Sr.
- 1996** - Neal Palmer "Pal" Brooks
Snead Young Mathews Davis
Henry Gatrell
Barnette E. Greene Jr.
Gov. Wayne Mixson
- 1997** - William "Bill" H. Krome
J.R. "Jack" Spratt
Raymon F. Tucker
Robert Billingsley Whisenant
Stephen Monroe Yoder
- 1998** - Miles Edward Groover
Edna Pearce Lockett
Maxey D. Love Jr.
Elliott L. Maguire
Mabel M. Simmons
- 1999** - Alto Lee Adams
Bert J. Harris Jr.
Kenneth F. Jorgansen
Copeland D. Newbern
John Powell Wallace
- 2000** - Tom B. Adams
Jack Monteith Berry
William A. "Bill" Graham
Henry F. Swanson
- 2001** - Al Bellotto
Copeland Griswold
Fountain H. May Sr.
Bert Edward Roper
- 2002** - Bernard A. Egan
Carl B. Loop Jr.
J.R. "Rip" Graves
George F. Sorn
- 2003** - Arlen Neil Jumper
Oma Richard Minton Sr.
Dr. Martha Rhodes Roberts
Dr. Kenneth Ray Tefertiller
- 2004** - Thomas Richard Barber Jr.
Vick and Faye Blackstone
Donald Fariss May
Fred Y. Montsdeoca
Robert Nelson "Bob" Morris
- 2005** - Dr. James M. Davidson
Paul J. DiMare
William D. "Billy" Long
Jo Ann Doke Smith
Frank "Sonny" Williamson Jr.
- 2006** - Charles R. "Chuck" Smith
Dudley Adelbert Putnam
James Neville McAuthur
Lillie "Belle" Jeffords
Roy Gene Davis
- 2007** - William R. Boardman
Albert Greenberg
Carroll Wayne Hawkins
Berryman "Buster" Longino Jr.
Ed and Imogene Yarborough
- 2008** - "Pete" Clemons
Hugh Malakowsky English
Fritz Stein Jr.
Alto Alfred Straughn
- 2009** - Dr. James Griffiths
Richard Kelly
Kay Richardson
Mason Smoak

..... 2010 SCHOLARSHIP WINNERS

Somer Harvey Nina Guba Courtney Newsome Jenna Rogers Austin Pluskot
Caitlin Cribbs Megan Young Anna Williamson Ashley Allen Jessica Mills

..... **THANK YOU**

... to the following for their contribution to the scholarship program.

Barney Greene JoAnn R. Smith (Doke)
Chip and Jemy Hinton John D. Hooker
Don Plagge John T. Woeste
Farm Credit of North FL Kay M. Richardson
Farm Credit of Southwest FL Pete & Susanne Clemons
Florida Tomato Exchange Randy & Juliana Fournier
George & Joyce Sorn

..... **THANK YOU**

... to the Institute of Food and Agricultural Sciences for producing the video presentation on the 2010 inductees and to the Florida Department of Agriculture and Consumer Services for their contributions in helping to make this event a success.

..... **THANK YOU**

... to the following organizations for sponsoring the reception in 2010.

DiMare Company Florida State Grange
Farm Credit of Central FL Florida Tomato Committee
Farm Credit of Southwest FL Florida Tomato Exchange
Florida Cattlemen’s Association Florida Tomato Growers Exchange
Florida Department of Citrus Hendrix & Dail
Florida Fruit & Vegetable Association Indian River Citrus League Inc.
Florida Citrus Mutual Sobey’s Produce
Florida Citrus Packers South Lake Apopka Citrus Growers Association
Florida Feed Association, Inc. Stallings Crop Insurance
Florida Fertilizer & Agrichemical Association Willis North America, Inc.
Florida Nursery Growers and Landscape Association

.....**THANK YOU**.....

... to Tampa Bay Wholesale Growers, Florida Nursery, Growers & Landscape Association and Hill's Raingreen Tropicals for providing the centerpieces for the 2010 Hall of Fame Banquet. A sticker will be on one of the programs at each table to indicate the winner of the centerpiece to take home.

.....**THANK YOU**.....

... to the following individuals and organizations for their contributions to the Youth Mentor Program - 2010 Mentor Sponsors

- | | |
|--|------------------------------------|
| Andy & Martha Roberts | Florida Tomato Exchange |
| Artesian Farms, Inc. | Florida State Fair Authority |
| Barney Greene | George H. Wedgworth |
| Brooks Tropicals, Inc. | Hillsborough County Farm Bureau |
| Carey Cattle Company | Hillsborough County FFA Federation |
| Chemical Dynamics, Inc. | John C. Norris (Jack) |
| Chip & Jemy Hinton | John D. Hooker |
| Doyle & Debbie Carlton | Long Farms, Inc. |
| Fancy Farms | Love Farms |
| Farm Credit of Southwest FL | Melda H. Bassett |
| Florida Citrus Mutual | Mr. & Mrs. L. M. Buddy Blain |
| Florida Department of Citrus | Pete & Susanne Clemons |
| Florida 4-H Foundation, Inc. | Richard Barber Farm |
| Florida Farm Bureau Federation | Robert F. Fuchs |
| Florida Fertilizer & Agrichemical Assoc. | Story Grove Service, Inc. |
| Florida Fruit & Vegetable Association | |

.....**YOUTH MENTEES**.....

- | | | |
|------------------|-----------------|-------------------|
| Anna Williamson | Haley Webb | Krystina Thompson |
| Ashley Allen | Jared Padgett | Kyle Pownall |
| Ashley Avant | Jenna Rogers | Lindsay Schramm |
| Austin Pluskot | Jessica Cris | Luke Kulpa |
| Bernie LeFils | Jessica Mills | Megan Young |
| Brittany Coleman | Johanna Wilkes | Nina Guba |
| Caitlin Cribbs | Kaitlyn Gill | Sean Russell |
| Calli Jo Parker | Kaitlyn Piccora | Shelby Shumaker |
| Courtney Newsome | Kaleb Clyatt | Somer Harvey |

• • • • • 2009-2010 AG HALL OF FAME MEMBERSHIP • • • • •

A. Duda & Sons
Adams Ranch Inc.
Alico, Inc.
Artesian Farms, Inc.
Ben Hill Griffin, Inc.
Mr. & Mrs. L. M. Buddy Blain
Mr. & Mrs. Reggie Brown
Carey Cattle Company
Chemical Dynamics, Inc.
CoBANK
Department of Citrus
DiMare Company
Fancy Farms
Farm Credit of Central Florida
Farm Credit of North Florida
Farm Credit of Southwest Florida
Florida 4-H Youth Development Program
Florida Cattlemen's Association
Florida Citrus Mutual
Florida Fertilizer & Agrichemical Association
Florida Fruit & Vegetable Association
Florida Nursery Growers & Landscape Association
Florida State Fair Authority
Florida Strawberry Growers Association
Florida Farm Bureau
Florida Feed Association, Inc.
Florida Peanut Producers Association
Florida Tomato Committee
Florida Tropical Fish Farms
Greater Jacksonville Agricultural Fair
Greene Groves & Ranch, Ltd.
Growers Fertilizer Corporation
M. C. Griswold
Gulf Citrus Growers Association
Mr. & Mrs. Wayne Harris
Hillsborough County Agriculture Industry Development
Hillsborough County Farm Bureau
Hillsborough County Foundation FFA, Inc.
Chip & Jemy Hinton
Hunt Brothers Cooperative
Indian River Citrus League Inc.
Kahn Grove Service, Inc.
Larson Dairy, Inc.
Long Farms, Inc.
Marion County Farm Bureau
McArthur Farms, Inc.
Robert Morris
Myke Morris
Mr. & Mrs. John C. Norris
Oglesby Plants International
Orange County Farm Bureau
Peace River Valley Citrus Growers Association
Polk County Farm Bureau
R.C. Hatton, Inc.
R.J. Nathe & Sons, Inc.
Richard Barber Farm
Sarasota County Farm Bureau
Southeast AgNet Radio Network
Stallings Crop Insurance
Story Grove Service, Inc.
Sugar Cane Growers Cooperative
Sunshine State Federal Savings
Tampa Bay Wholesale Growers
Tampa Wholesale Nursery
University of Florida/IFAS
US Sugar Corporation
Volusia County Farm Bureau
Western Palm Beach County Farm Bureau





Florida Agricultural Hall of Fame
100 South Mulrennan Road
Valrico, FL 33594
(813) 230-1918
www.flaghalloffame.com