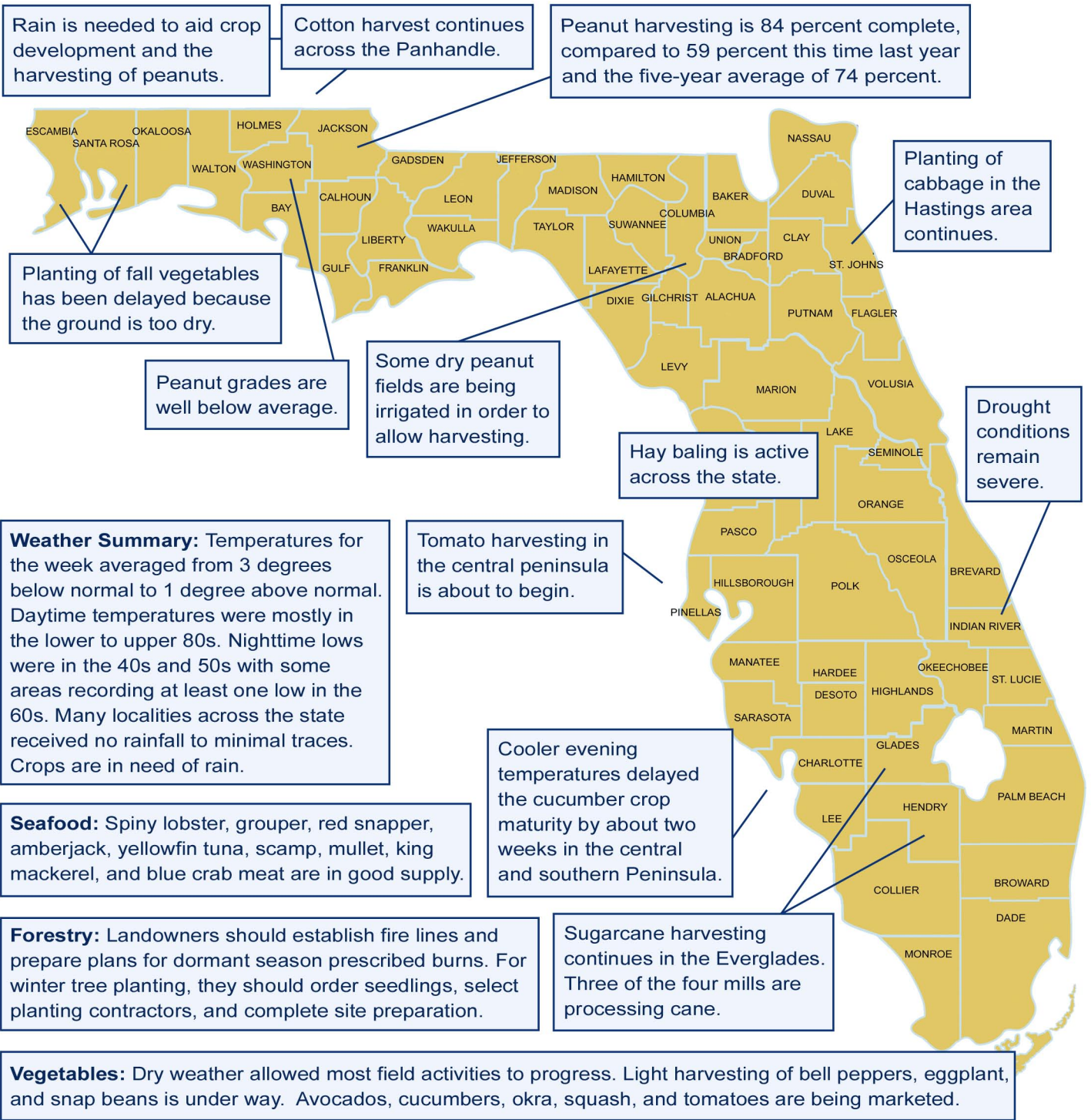


The Week in Florida Agriculture

October 18-24, 2010



Livestock and Pastures: Pasture growth was slowed by the cool, dry weather. Most pastures statewide are in fair to good condition. Land preparation and planting of winter forage was delayed by dry soil conditions. Continued delays could reduce overall acreage planted for winter pastures. Stock pond levels throughout Florida have continued to decrease and are below normal for this time of year. The majority of the cattle are in fair to good condition.

Citrus: Overall, there are abnormally dry conditions in much of the citrus area. Thirty-six packinghouses and six processors are open. Cultural practices included herbicide and fertilizer application, tree removal, and irrigation.